



CUMI
POWER TOOLS
Empowering the Customer



DIY KIT

CTK 035

User Manual



Dear Customer

Congratulations !

You have taken the correct decision in choosing

CUMI POWER TOOLS

CUMI POWER TOOLS is manufactured by Carborundum Universal Limited, a market leader in abrasives for more than five decades. **CUMI's** foray into power tools is a reiteration of its commitment to provide customers with **TOTAL SOLUTIONS**.

A combination of the right power tool, right spares, right accessories and prompt service. A combination, which is designed to empower the customer.

CUMI POWER TOOLS product range caters to three distinct segments -

Metal Working, Construction and Interior Decoration, including Wood Working. In all three segments, **CUMI's** policy is to provide a combination of quality Abrasives and Power Tools to increase work efficiencies and enable customers to complete their tasks with ease.

This manual is to provide you with complete guidelines on correct usage of your Power Tool, so as to ensure safety and maximize

Your safety is utmost importance to us. Please read instruction before use.

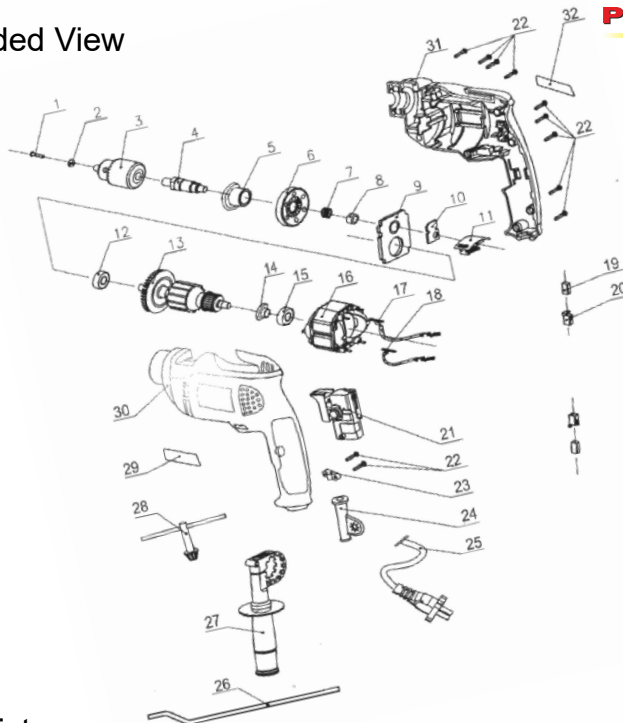
This User Manual covers the following :

1. General Safety Instructions
2. Exploded view & Parts List
3. Introduction to the Power Tool you bought
4. Product Specifications
5. Application Details
6. Usage Instructions
7. Inspection and Maintenance Tips
8. Trouble Shooting
9. Warranty Card

General Safety Instructions

- ❖ Please read all safety and operating instructions before attempting to use your CUMI Power Tool.
- ❖ Keep your area free from clutter and well illuminated to avoid accidents.
- ❖ Do not operate power tools in explosive atmosphere. Inflammable dust or liquids may get ignited by the sparks from power tools.
- ❖ Do not alter or modify the factory fitted plugs. By doing this, you will reduce chances of electrical shock.
- ❖ Double insulated Power Tools do not require earthing. However, single insulated tools require earthing connections properly grounded to avoid electrical shock
- ❖ Never abuse the power cable by carrying the tool by the cable. Keep the cable away from sharp objects, oil and heat.
- ❖ Always have a good balance while using power tools. Over-leaning, balancing the body on one foot, operating the tool when tired, or under the influence of alcoholic drinks or drugs can cause severe injuries.
- ❖ Wear safety equipment like eye protection goggles, gloves, earplugs, hard shoes, helmet, etc., as applicable, depending on the work you do.
- ❖ Ensure that the switch is in off position, before switching on the power tool.
- ❖ Similarly, ensure that chuck keys, spanners or any other tools used for fitting accessories are removed before the tool is started.
- ❖ Beware of loose things like your dress, hair, etc., getting entangled with the moving parts of the Power Tools. Dress appropriately.
- ❖ Do not force the tool when using it. Check whether correct tool / abrasive is used, if the tool does not perform as per expectations. Also use the correct tool for the right application.
- ❖ Disconnect the plug from the mains, either before fitting accessories or making any adjustments or before storing the Power Tools.
- ❖ Keep tools away from children. Insist on reading the instructions, if anybody unfamiliar with a particular type of Power Tools attempts to use it.
- ❖ Maintain Power Tools and keep them in good working condition. Improper maintenance and delaying the service on due dates may cause accidents.
- ❖ Always hold the Power Tool firmly in both hands. Keep the work-piece clamped and firmly held.
- ❖ Always direct the cable to the rear, away from the machine.
- ❖ The use of any accessory or attachment other than those recommended in this booklet, may present a personal risk or injury.
- ❖ When you want the power tool repaired, get it done through an authorised service personnel

Exploded View



Part List

S.No	Description	Qty	S.No	Description	Qty
1	Screw	1	17	Terminal	1
2	Spring	1	18	Terminal	1
3	Drill Chuck	1	19	Carbon Brush	2
4	Spindle	1	20	Brush Holder	2
5	Guide Bush	1	21	Switch	1
6	Gear	1	22	Screw	11
7	Spring	1	23	Cord Clip	1
8	Oil Bearing	1	24	Cord Armor	1
9	Bearing bridge	1	25	Power Cord	1
10	Impact Pole	1	26	Depth Gauge	1
11	Switching Surge	1	27	Side handle	1
12	Deep Groove Ball Bearing	1	28	Key	1
13	Armature	1	29	Label	1
14	Anti-dust loop	1	30	Housing support	1
15	Deep Groove Ball Bearing	1	31	Housing cover	1
16	Stator	1	32	Label	1

Introduction to the Power Tool you bought **CUMI TOOL KIT**



1.	Impact Drill Machine 13mm	1 N
2.	Double End Bit & Connecting Rod	2 N
3.	Screw Driver Bits (10 N)	10 N
4.	Claw Hammer	1 N
5.	Plastic Expansion Bolt	10 N
6.	Utility Knife	1 N
7.	Screw Driver	1 N
8.	Measuring Tape 2M	1 N

9.	Side Handle	1 N
10.	6" Adjustable Spanner	1 N
11.	6" Cutting Plier	1 N
12.	HSS Drill Bits (for Metal / Steel)	3 N
13.	Wood Drill Bits (for Wood)	3 N
14.	Masonry Drill Bits (for Wall / Brick)	3 N
15.	1" Socket	8 N
16.	Chuck Key	1 N

Introduction to the machine CTK 035

1. Side Handle
2. Drill Chuck
3. Drill / Hammer mode selector
4. Housing
5. Switch with Variable Speed Trigger
6. Switch Lock on Button
7. Cord Armor
8. Forward / Reverse control lever



Product Specifications

Model Code		CTK 035
Voltage		230-240V~50Hz
Power input		650 W
No load speed		0-3500/min
Impact rate		0-44000/min
Chuck capacity		13mm
Drilling capacity	Masonry	13mm
	Wood	15mm
	Steel	10mm
Spindle Thread		1/2"-20 UNF
Machine weight		1.8 kg

Application details

You may use this product for the purposes listed below :

1. Impact drilling in concrete, brick, or other masonry.
2. Drilling in wood.
3. Drilling in Ceramics, Plastics, fiberglass, and Laminates.
4. Drilling in Metals.

*Global Tools
Engineered in India*

Usage Instructions

The machine is intended for impact drilling in brick, concrete and as well as for drilling in wood, metal and plastic.

Auxiliary Handle

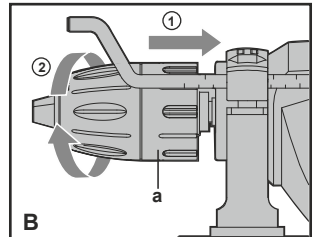
Slide the handle onto the drill and rotate to the desired working position. To clamp the auxiliary handle rotates the handgrip clockwise. To loosen the auxiliary handle rotate the hand grip anti-clockwise. Always use the auxiliary handle.

WARNING! Always check and rotate the handle tightly before using to avoid any accident.



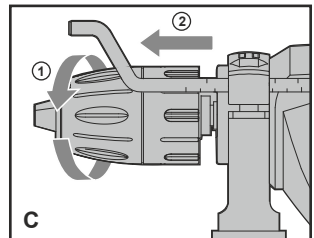
Installing the depth gauge (See Fig. B)

The depth gauge can be used to set a constant depth to drill. To use the depth gauge, loosen the handle by rotating the bottom section of handle anti-clockwise. Insert the depth gauge through hole in handle. Slide the depth gauge to required depth and tighten fully.



Inserting a Tool into Chuck (See Fig. C)

Remove chuck key from key storage tab at base of drill handle, place key into chuck, turn key anti-clockwise to undo/loosen chuck, inset drill/tool and firmly tighten chuck by turning key clockwise. Remove key and replace in storage tab at base of drill handle.

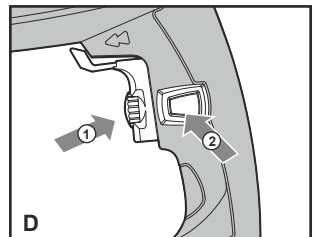


ON/OFF Switch

Depress the switch to start the tool and release it to stop your tool.

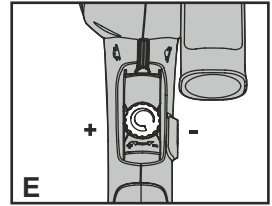
Switch Lock-ON Button (See Fig. D)

Depress on/off switch then lock-on button, release on/off switch first and lock-on button second. Your switch is now locked on for continuous use. To switch off your tool just depress and release the on/off switch.



Variable Speed Control (See Fig. E)

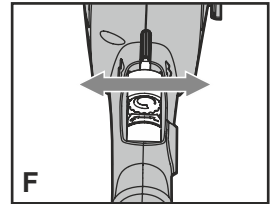
Adjust the variable speed control to increase or decrease the speed according to the material and accessory to be used (also possible during no load operation). Low speed will provide low torque and high speed gives higher torque.



Forward and Reverse Rotation Control (See Fig. F)

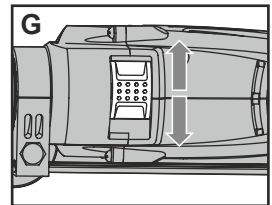
For drilling use forward rotation marked "<<<" (lever is moved to the left). Only use reverse rotation marked ">>>" (lever is moved to the right) to remove screws or release a jammed drill bit.

NOTE: Never move the forward/reverse switch whilst the drill in operation or the on/off switch is locked as this will damage the drill.



Hammer or Drilling Control (See G)

When drilling masonry and concrete push the drill/impact action selector switch into the hammer position "T". When drilling wood, metal, plastic push the switch into the drill position "B".



Working Hints for your Drill

1. Drilling masonry and concrete

Select the drill/impact action selector switch to the "hammer symbol" position. Tungsten carbide drill bits should always be used for drilling masonry, concrete etc with a high speed.

2. Drilling steel

Select the drill/impact action selector switch to the "drill symbol" position. HSS drill bits should always be used for drilling steel with a lower speed.

3. Pilot holes

When drilling a large hole in tough material (i.e. steel), we recommend drilling a small pilot hole first before using a large drill bit.

4. Drilling tiles

Select the drill/impact action selector switch to the "drill symbol" position to drill the tile. When tile has been penetrated, switch over to "hammer symbol" position.

5. Cool the motor

If your power tool becomes too hot, set the speed to maximum and run no load for 2-3 minutes to cool the motor.

Maintenance

Remove the plug from the socket before carrying out any adjustment, servicing or maintenance.

- ❖ Your power tool requires no additional lubrication or maintenance. There are no user serviceable parts in your power tool. Never use water or chemical cleaners to clean your power tool.
- ❖ Wipe clean with a dry cloth. Always store your power tool in a dry place. Keep the motor ventilation slots clean. Keep all working controls free of dust.
- ❖ Occasionally you may see sparks through the ventilation slots. This is normal and will not damage your power tool.
- ❖ If the supply cord is damaged, it must be replaced by the CUMI Authorized Service center or similarly qualified persons in order to avoid a hazard.

Trouble Shooting

- ❖ If your power tool does not start, check the plug on the power supply first.
- ❖ If the drill doesn't work properly, check the drill bit for sharpness, replace drill bit if worn. Check that the drill is set to forward rotation for normal use.
- ❖ If a fault can not be rectified, return the tool to an authorized dealer for repair.

PROBLEM	POSSIBLE CAUSE	REMEDY
Motor does not start.	1. Fuse.	1. Replace/reset 13 amp time delay fuse or circuit breaker.
	2. Brushes worn.	2. Have carbon brushes replaced in motor.
	3. Unsure.	3. Return to an authorised service agent for diagnosis.

Additional Safety Points for your Drill

- ❖ Wear ear protectors when impact drilling and Use auxiliary handle(s), if supplied with the tool.
- ❖ Hold power tool by insulated gripping surfaces, when performing an operation where the cutting accessory may contact hidden wiring or its own cord.
- ❖ Secure the material being drilled. Never hold it in your hand or across legs.
- ❖ Disconnect battery pack from tool or place the switch in the locked or off position before making any assembly, adjustments or changing accessories.
- ❖ Position yourself to avoid being caught between the tool or side handle and walls or post.
- ❖ If the bit becomes bound in the workpiece, release the trigger immediately, reverse the direction of rotation and slowly squeeze the trigger to back out the bit.
- ❖ Do not grasp the tool or place your hands too close to the spinning chuck or drill bit.
- ❖ When installing a drill bit, insert the shank of the bit well within the jaws of the chuck.
- ❖ Do not use dull or damaged bits and accessories.
- ❖ When removing the bit from the tool avoid contact with skin and use proper protective gloves when grasping the bit or accessory.

*Global Tools
Engineered in India*

Area Offices in India

Ahmedabad

No. 303, Mahalaya,
Near Hotel President
Off C.G Road, Near Municipal Market,
Navaragpura, Ahmedabad 380 009.
Tel : 079-26422501 / 26569721
Fax : 079-26568214

Kolkatta

Shrachi Tower, Unit No.1A
1st Floor, 686, Anadpur,
P.O.Kasba,
Kolkata-107
Tel : 033-24436461

Bangalore

N-706, Manipal Centre,
No.47, Dickenson Road,
Bangalore 560 042
Tel : 080-30770600

Ludhiana

Plot No:172, BXV, Street No.6,
Guru Nanak Motor Market,
G.T Road, Miller Ganj,
Ludhiana 141 003
Tel : 0161-2544300 / 2545300
Fax : 0161-2546300

Chennai

No:81,Vetri Vinayakar Koil Street,
Thiruvallswarar Nagar,
Anna Nagar West,
Chennai 600 040
Tel : 044-26157086

Mumbai

PB No.962 M,
United Indian Building, Illrd Floor,
Sir Pheroazshah Mehta Road,
Mumbai 400 001.
Tel : 022-22663894 / 22661360
Fax : 022-22662289

Cochin

Post Box No-1
Kalamassery Development Plot . P.O
Kalamassery – 683109
Ernakulam District, Kerala
Tel :0484-4093701

Pune

Plot No. 106, Shruthi Enclave
New Telco Road,
Udyam Nagar, Pimpri,
Pune 411 018
Tel : 020-27502105 / 6 / 7

Delhi

2nd Floor, Param Tower
11/5-B Pusa Road,
Opp-Telephone Exchange
New Delhi – 110005
Tel :011-23312754

Secunderabad

Plot No.1-8-208,
Door No.106,107
1st Floor, Golden Hawk Building,
Sindhi Colny, P.G.Road,
Secunderabad - 500 003.

Memo



CARBORUNDUM UNIVERSAL LIMITED

48, Sipcot Industrial Complex, Hosur 635 126. (TN) INDIA
email : powertools@cumi.murugappa.com
Tel No : 04344 304088 | www.cumi.murugappa.com

For Customer queries or complaints, please contact
Executive - Customer care at the above address or mail at
powertoolscustomercare@cumi.murugappa.com

*Global Tools
Engineered in India*